



**Borneo**  
Sabah Wildlife Adventure



# PIONEER EXPEDITIONS



## ITINERARY

Sabah Wildlife Adventure • Malaysian Borneo

12 DAYS • 11 NIGHTS

Kota Kinabalu – Sandakan – Sepilok – Kinabatangan River –  
Lahad Datu – Tabin Wildlife – Beach Stay – Kota Kinabalu

## HIGHLIGHTS

- Explore one of the oldest rainforests on the planet and experience Borneo's rich wildlife
- Visit the Sepilok Orangutan Rehabilitation Centre and see how captive Orangutans are reintroduced to the wild
- Cruise safari on Kinabatangan River – one of Borneo's major wildlife corridors

## TOUR ESSENTIALS

Tour Style	Nature Expedition
Tour Start	Kota Kinabalu
Tour End	Kota Kinabalu
Accommodation	Resort & Lodge
Difficulty Level	Medium activity level
Included Meals	9 Breakfasts, 8 Lunches, 5 Dinners

## EXTRAORDINARY AND UNIQUE BORNEO



This Borneo holiday focuses on the wildlife, rainforests and beaches of the Sabah region of Borneo, one of the best areas for seeing the great variety of Borneo's fauna and flora. You will get to trek through jungles that are millions of years old teemed with so much wildlife, from the smallest insects and amphibians to orangutans, gibbons, pygmy elephants and exotic birds. We will have plenty of time to trek in the rainforest and experience it at first hand, both during the day and at night. As well as having time to relax at some of Borneo's best lodges and beach resorts.



Pioneer Expeditions

Stable Cottage • Chydyok Road • Chaldon Herring • Dorchester • DT2 8DN  
t 01202 798922 • e info@pioneerexpeditions.com

BOR08

# BORNEO *an overview*

Sarawak and Sabah make up the more popular Malaysian portion of the beautiful nature playground - Borneo. This magical Island is draped in the richest and one of the most ancient equatorial rainforests on the planet. It acts as shelter to some incredible native wildlife including Orangutans and proboscis monkeys in the canopy above, pygmy elephants roaming the riversides and clouded leopards wandering the depths of the jungle. Borneo's extraordinary wilderness is made up of endless Rivers, dramatic Mountains, dense steamy Jungle, as well as some spectacular beaches. Borneo serves up true remoteness, wildlife and adventure.

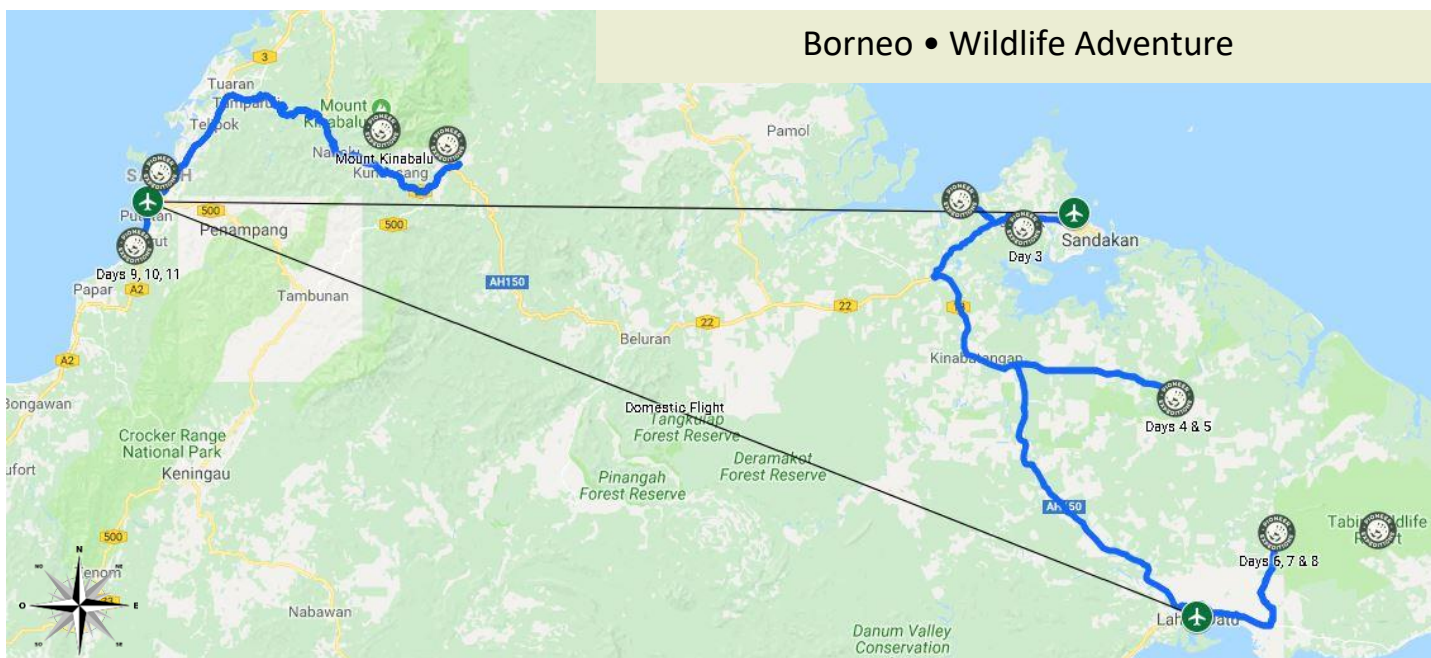
## WHY PIONEER EXPEDITIONS?

Pioneer Expeditions are one of the few specialists that really *do* off the beaten track and unique adventures. The team have a real passion for wildlife and adventure travel which we love to share with our clients. We delight in searching the world for new destinations, new experiences and creating the most incredible adventures.

We like to introduce our clients to unique, the different, and the incredible. Whether it is through wildlife tracking, sea kayaking, snorkelling, trekking, rafting, cycling or observing wildlife in its natural environment, we want to give you the real Pioneer experience.

From the moment you choose to travel with Pioneer Expeditions until you return back home, you are supported by our dedicated team. We listen to what you want and can create an itinerary around your specific needs, working with your budget and with a commitment to responsible travel. Alternatively, our small group tours have a maximum of 8 people\*, making it a much more personal experience.

## ITINERARY



Pioneer Expeditions  
Stable Cottage • Chydyok Road • Chaldon Herring • Dorchester • DT2 8DN  
t 01202 798922 • e info@pioneerexpeditions.com

BOR08



## DAY 1: ARRIVE IN KOTA KINABALU

The trip starts when you arrive at Kota Kinabalu Airport. Our driver will meet you at the airport and transfer you to your hotel for check in. Enjoy the rest of the day at your own leisure.



Overnight:  
**Hotel**



Meals:  
**N/A**



Approx. Distance:  
**Airport Transfer- less than  
an hour**



Activity:  
**Personal Preference**

## DAY 2: KINABALU PARK & PORING HOT SPRINGS

Depart early in the morning for a scenic journey into Borneo's rugged island interior. Travel along winding roads, passing paddy fields and local villages en-route to the Poring Hot Springs.

Take a walk around this beautiful compound which takes its name from the giant bamboo that surrounds it. See Japanese-style outdoor hot tubs which are filled from natural hot springs believed to possess therapeutic effects.

Continue to nearby Kipungit Waterfall to admire this spectacular natural wonder. Alternatively, opt for a trek to the canopy walk, a suspension bridge that soars 40-metres above the forest floor. For thrill seekers, this swaying, man-made bridge is an ideal place to enjoy views of the rainforest, tree canopies and distant rolling hills.

At midday break for lunch then resume the drive back to Kota Kinabalu, stopping at Mount Kinabalu National Park. Take a guided walk and learn from a local naturalist about the vast array of flora found in this lush park. Admire views of Mt Kinabalu, Southeast Asia's highest peak, in the distance before returning to Kota Kinabalu.



Overnight:  
**Hotel**



Meals:  
**B,L**



Approx. Distance:  
**5-6 hours driving**



Activity:  
**Trekking**

## DAY 3: KOTA KINABALU – SANDAKAN

Early morning meet our driver at the main lobby for the transfer to the Kota Kinabalu Airport for the flight to Sandakan. On arrival to the Sandakan Airport, we meet our guide and proceed to Labuk Bay Sanctuary. We drive through small villages and past endless palm oil plantations- a stark reminder that the natural habitat of the Orangutan and gibbons is under constant threat from commercial interests. We arrive at the Labuk Bay Proboscis Monkey Sanctuary, arguably the best Borneo endemic Proboscis monkey observation post. We will wait to see the feeding time, when the animals will approach the feeding platforms. Oriental pied hornbills, squirrels, silver-leaf monkeys, can often be spotted here as well.

Following our introduction to the Proboscis monkeys we proceed to the unique English Tea House for lunch. Located in the grounds of the Agnes Keith house, we experience the lush, tropical greenery and cool breezes while enjoying spectacular views of the town and bay.

After lunch, we transfer to your hotel and the afternoon is free at leisure.



Overnight:  
**Resort**



Meals:  
**B,L**



Approx. Distance:  
**Approx. 2 hours driving**



Activity:  
**Wildlife**



## DAY 4: SANDAKAN –SUKAU – KINABATANGAN RIVER



After Breakfast at the hotel we start our tour of the Sepilok Orangutan Rehabilitation Centre, the largest and most renowned in the world. We can view displays at the Nature Education Centre to learn about the work to rehabilitate orangutans into the wild and see a slide show on the functions and rehabilitation efforts of the reserve. We will then walk into the rainforest to view orangutans being fed in their natural habitat.

After the feeding, we will proceed overland to the Gomantong Caves- famous as a source of swiftlet's nests which are the raw material for Bird's Nest Soup, an expensive Chinese delicacy. The journey takes just over 2 hours and upon arrival we walk on a planked walkway to the cave and then explore one of the most fascinating caves in Sabah. Thereafter continue overland for about half an hour to

Sukau where we will check into our lodge.

Depart for an estimated 2 hours overland journey to the multi award winning Sukau Rainforest Lodge. Take a river cruise using electric motor in search of wildlife and birds.

Enjoy candle light dinner overlooking the river bank followed by slide presentation and interpretation by naturalist guide.



Overnight:  
**Lodge**



Meals:  
**B, L, D**



Approx. Distance:  
**Approx. 3 hours' drive**



Activity:  
**Wildlife**

## DAY 5: KINABATANGAN RIVER

Take a 6am morning river cruise up the Kinabatangan River to Kelenanap oxbow lake to view more birds and wildlife. After breakfast, proceed for an educational tour along the lodge's Hornbill Boardwalk with our in-house naturalist.

After lunch, join our in house Orangutan Talk activity.

In the afternoon, we proceed for another river cruise for more wildlife



Overnight:  
**Lodge**



Meals:  
**B, L, D**



Approx. Distance:  
**Varies**



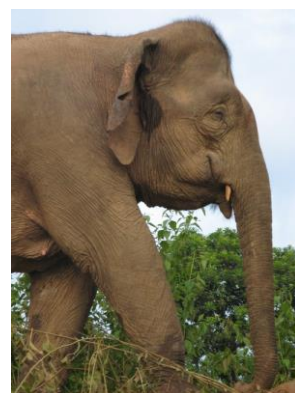
Activity:  
**Wildlife and education**

## DAY 6: KINABATANGAN RIVER – SUKAU – TABIN WILDLIFE

Wake up to the calls of birds, insects and other animals.

After breakfast, we will drive for about 4 hours to the Lahad Datu. Thereafter, continue to Tabin Wildlife Centre. Check into an attractive timber lodge at Tabin Wildlife Resort, which comes complete with private balcony, air conditioner, ceiling fan and hot water shower, a welcome luxury in the forest. Nestled within the rainforest beside the Lipad river, this lovely setting is home to a surprising variety of birds, insects and small mammals. Discover the rich variety of jungle herbs, some endemics, used for generations by local folks for the treatment of various ailments.

In the afternoon, trek from the Elephant trail to the active Lipad mud volcano which provides a mineral salt lick for wildlife, arrive at the elevated bare area of the mud volcano which is frequented by wildlife and birds. Try to identify the multitude of animal footprints here. The adventurous can try the effects of the volcanic mud, said to be responsible for a fine complexion. Trek from the mud volcano back to the main road.



Pioneer Expeditions

Stable Cottage • Chydyok Road • Chaldon Herring • Dorchester • DT2 8DN  
t 01202 798922 • e info@pioneerexpeditions.com

BOR08

After dinner, enjoy a night walk to look out for nocturnal wildlife and birds. Remember to look up at the clear, dark sky or Tabin, identify the constellations above you and make a wish or two.

**Please Note:** 4WD Transfers in and out from Lahad Datu to Tabin and programs in Tabin Wildlife Reserve is on a join in basis. Private transfers and private guides can be requested at a supplement (even with a private guide vehicle usage for all resort activities and night drive will be on a join in basis)

 Overnight: **Lodge**       Meals: **B, L, D**       Approx. Distance: **Approx. 4 hour drive**       Activity: **Exploring**

## DAY 7: TABIN WILDLIFE

Join the early morning bird walk to discover some of Tabin's rich collection of almost 300 bird species.

After breakfast, we will go on a short drive to a core area within Tabin Wildlife Reserve, stopping on the way at a bird watching tower for another chance to see some of the 300 species of birds. We will also visit the Orangutan Release Centre, where your guide will explain the process of how the Orangutans are released, before trekking through the lush green rainforest known for its rich diversity of plants and animal species, as well as take a trip to the Lipad Waterfall. Take a dip in the natural pool and enjoy a refreshing shower under the waterfall. Alternatively explore the surrounding vegetation or just relax.

In the afternoon, try out the Tabin Rainforest Foot Soak made with a natural blend of herbs, to relax tired muscles after long jungle treks. In the evening, a dusk drive to look out for more nocturnal wildlife and birds coming out to look for food during this time of day.

 Overnight: **Lodge**       Meals: **B, L, D**       Approx. Distance: **Varies**       Activity: **Wildlife**

## DAY 8: TABIN WILDLIFE

Jungle walks nearby the resort in the morning and afternoon.

Enjoy dinner at the resort before heading off on a night safari to look out for more nocturnal wildlife and birds.

 Overnight: **Hotel**       Meals: **B, L, D**       Approx. Distance: **Varies**       Activity: **Trekking and Wildlife**

## DAY 9-11: TABIN WILDLIFE –LAHAD DATU – KOTA KINABALU

After breakfast at the lodge, you will have the day for your own leisure until we transfer to the airport for your onwards flight to Kota Kinabalu.

Arrive in Kota Kinabalu and be met and greeted by our representative and proceed to your resort for your 3 night beach stay.

Check-in. Rest of the day at leisure and own activities.

 Overnight: **Hotel**       Meals: **B,L(day 9 only)**       Approx. Distance: **Approx. 1 hour drive time**       Activity: **Leisure**

## DAY 12: KOTA KINABALU – DEPARTURE

After breakfast, transfer to the airport in time for your flight home

 Overnight: **NA**       Meals: **B**       Approx. Distance: **Less than an hour's drive**       Activity: **Travel**





# ACCOMMODATION, *at a glance*

## Kota Kinabula Jesselton Hotel

<http://jesseltonhotel.com/>



## Sandakan Sepilok Nature Resort



## Sukau Sukau Rainforest Lodge

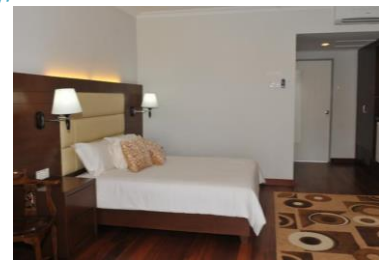


## Lahad Datu Tabin Wildlife Centre



## Kota Kinabalu Langkah Syabas

<http://www.langkahsyabas.com.my/>



Pioneer Expeditions  
Stable Cottage • Chydyok Road • Chaldon Herring • Dorchester • DT2 8DN  
t 01202 798922 • e info@pioneerexpeditions.com

BOR08

# IMPORTANT INFORMATION

## INCLUDED

- Accommodation as per specified above
- Meals as mentioned in the itinerary (B=Breakfast, L=Lunch, D=Dinner)
- Tours and transfers as mentioned above on sharing basis with English Speaking guide.
- Internal flights

## NOT INCLUDED

- Meals other than mentioned
- International flights
- Expenditure of personal nature, such as drinks, souvenirs and laundry etc
- Other tours other than those mentioned in the program
- Any early check in or late check out
- Visa for Malaysia
- Tips
- Travel insurance

# ADDITIONAL INFORMATION

ACTIVITY DURATION	2-5 hours
SEASON	March – October
BEST TIME TO GO	The best time of year to visit is March to October as these are usually the driest and most settled times of the year.
GROUP SIZE	We are able to arrange tailor made trips for 2 or more people (the price quoted is based on a minimum of 4 people, and a supplement may apply if less).
EXPEDITION SCHEDULE	Tailormade departures to suit your dates from March to October. Two group departures for 2019
DIFFICULTY LEVEL	Our grades have been designated based on our perception of the degree of physical activity you are likely to require to enjoy the adventure. These are only a guideline. This itinerary has a 'Medium' activity level (2-5 hours per day). This means that you will need to be of average fitness.





# THE PIONEER BOOKING PROCESS

---

Where do you go from here? Well, you can feel free to email us at [info@pioneerexpeditions.com](mailto:info@pioneerexpeditions.com) if you're interested in this trip, or any of our other expeditions from around the world. Visit our website [www.pioneerexpeditions.com](http://www.pioneerexpeditions.com) to unearth all of our other equally amazing trips and destinations.

**1. Contact us -**

We will be happy to answer any questions or enquiries you may have. From here we will begin to plan and put together your dream adventure holiday! Alternatively, on our website you will find our booking and enquiry forms; once filled in, we will be notified of your enquiry and will get back to you ASAP.

**2. Leave everything to us -**

Everything will be arranged and booked by us, but we will make sure to keep you updated every step of the way. In addition, we can arrange your international flights if needed, as we have access to competitive airfares. We can also arrange any additional tours or additional night's accommodation.

**3. Wait for your adventure to begin -**

Sit back and count down the days until your trip of a lifetime with Pioneer Expeditions. We'll handle all of the last minute preparations and provide you with everything you need. All practical information will be sent out to you, prior to your trip.

If you feel like altering this itinerary to suit your personal preferences, we can arrange all of that and more – just get in contact with us and let us know your requirements and wishes. From here, we can simply tailor-make your dream holiday.

