

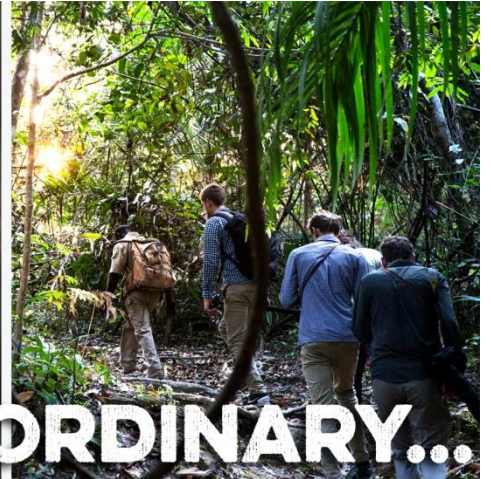


## West Tanzania

Ultimate Chimpanzee Adventure



# PIONEER EXPEDITIONS



**DO SOMETHING EXTRAORDINARY...**

## ITINERARY

## Tanzania • Ultimate Chimpanzee Adventure

**8 DAYS • 7 NIGHTS**

**Kigoma – Gombe Stream National Park –  
Mahale Mountains National Park – Kigoma**  
This trip can be tailor made.

## HIGHLIGHTS

- Observe chimpanzees in the world's premier tracking destinations; Mahale Mountains National Park and Gombe Stream National Park.
- Walk in the footsteps of Jane Goodall and develop your understanding of chimpanzee behavior from our expert guides.
- Stay in luxury permanent tented camps on the sandy shorelines of Lake Tanganyika.

## TOUR ESSENTIALS

Tour Style	Wildlife Journey
Tour Start	Kigoma
Tour End	Kigoma
Accommodation	Hotel, Permanent Tented Camps
Included Meals	7 Breakfasts, 6 Lunches, 7 Dinners
Difficulty Level	Medium

## WESTERN TANZANIA



Visit two of the most remote wildlife destinations in Tanzania; the Mahale Mountains National Park and the Gombe Stream National Park, both world renown for incredible chimpanzee tracking experiences. On the shores of Lake Tanganyika the Mahale Mountain forests are home to one of the largest populations of habituated chimpanzees in Africa, while the Gombe chimpanzees are the descendants of individuals observed by the primatologist Dr Jane Goodall DME. Prepare yourself for a thrilling encounter with our closest living genetic relative!



Pioneer Expeditions  
Stable Cottage • Chydyok Road • Chaldon Herring • Dorchester • DT2 8DN  
t 01202 798922 • e [info@pioneerexpeditions.com](mailto:info@pioneerexpeditions.com)

Tan05

## TANZANIA *an overview*

---

It's no surprise that Tanzania is famous for both its wildlife and its incredible National Parks. Gombe Stream and Mahale vie with each other as the best locations in the world to track wild chimpanzees.

It was Jane Goodall, the world renowned primatologist and conservationist that fully habituated the Gombe chimpanzees. The park remains a haven for researchers, in part due to the large sizes of the chimpanzee groups, with the Kasekela group being the largest of at least 40 individuals. Trekking is through the dense forest as there aren't many open areas in the park, and in the tree canopy it's possible to spot red-tailed monkeys, blue monkeys and red colobus. There are also over 200 bird species, including the African crown eagle and three kinds of kingfisher. Surprisingly the wet season can be a good time to track chimpanzees as they don't roam as far! The remoteness of the park means it is only accessible by boat and two days are allowed to provide time to locate the chimpanzees.

The Mahale Mountains National Park is a global hotspot and arguably the best place to encounter wild chimpanzees. Rugged jungle covers its peaks, towering almost 2 km high, only to plunge down to the white beaches of Lake Tanganyika. The area is often referred to as Nkungwe after the park's largest mountain. The park is home to approximately 600 chimpanzees, with 15 individual groups, but it's also home to Red and Angola Colobus, Yellow Baboons and bird species such as the Bamboo Warbler and Stuhlman's Starling which are seen nowhere else in Tanzania.

Lake Tanganyika is the second deepest and largest fresh water lake in the world and is home to over 1000 species of fish, and both the Nile crocodile and the slender-snouted crocodile.

The thrilling highlight of your visit will be the chimpanzee tracking. Activity peaks in the early morning and afternoon, so you will track them early each day to have the best chance of observation and once you have located them you are permitted to stay with the group for an hour. The use of tools to obtain foods has been well documented across all chimpanzee populations, most notably they will poke a stick into a termite mound to feed on insects and use rocks to crack nuts open. Movement during the day is often on the ground but in the forest canopy they will also use their long arms to brachiate.

Western Tanzania has a lot to offer; beautiful forests and the chance to observe wild chimpanzees; this is complemented by the hospitality of the locals to make for a truly magical experience.

## WHY PIONEER EXPEDITIONS?

---

Pioneer Expeditions are one of the few specialists that really do off the beaten track and unique adventures. Our teams at Pioneer Expeditions are driven by their passion for adventure travel which we love to share with our clients. We delight in searching the globe for new destinations, new experiences and creating the most incredible adventure holidays. From the moment you choose to travel with Pioneer Expeditions until the time you return home you are supported by our dedicated team. We listen to what you want and can create an itinerary around your specific needs, working with your budget and with a commitment to responsible travel.



# ITINERARY

## DAY 1: KIGOMA – GOMBE STREAM NATIONAL PARK

Upon arrival in Kigoma you will be met at the airport. Your transfer to Gombe will be by a dhow boat along Lake Tanganyika. Gombe Stream National Park was established in 1968 and is an untamed forest which includes grassland, bamboo and tropical rainforest. Besides chimpanzees it is home to other primates such as olive baboons, red colobus, red-tailed monkeys, blue monkeys, vervet monkeys and also over 200 bird species.

Depending on your arrival time you may have time to explore the park on a forest walk, or you may choose to relax at the lodge.



### Overnight Mbali Mbali Gombe



Overnight:  
**Tented  
lodge**



Meals:  
**D**



Distance:  
**Approx. 10 miles transfer**



Activities:  
**Transfer**

## DAY 2 & 3: GOMBE STREAM NATIONAL PARK

You have two full days to explore Gombe Stream National Park. Despite being the smallest of Tanzania's national parks at 52 sq. km (20 sq. miles) it is world renown due Dr Jane Goodall's chimpanzee research, and you will have the opportunity to observe descendants of the individuals she observed.

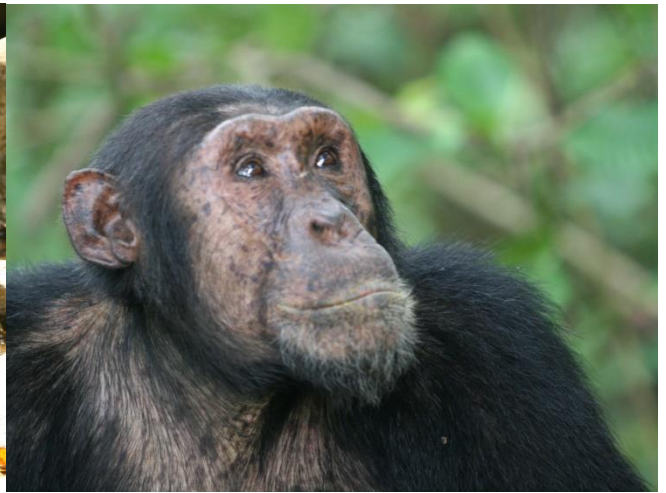
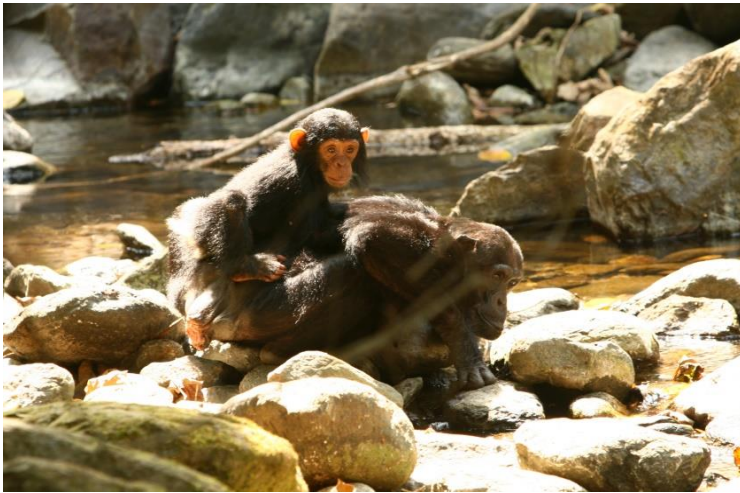
In the mornings your guide will lead you on a trek through the park to locate a group of chimpanzees. Chimpanzee group sizes can range in size from 2 up to 80 individuals in large home ranges. The total chimpanzee numbers in Gombe are currently estimated at around 95 individuals. Once you locate a group you will observe them for up to an hour and because of the chimpanzees their large social groups it's possible to witness various behaviours, such as mothers interacting with infants, or grooming which is a key activity to reinforce individuals social status. After leaving the chimpanzees it will be possible visit other areas of the park, such as hiking to "Jane's Peak", one of Dr Jane Goodall's favourite locations and where there are spectacular views of the park and Lake Tanganyika.



Pioneer Expeditions  
Stable Cottage • Chydyok Road • Chaldon Herring • Dorchester • DT2 8DN  
t 01202 798922 • e info@pioneerexpeditions.com

Tan05





#### Overnight Mbali Mbali Gombe



Overnight:  
**Tented  
lodge**



Meals:  
**B, L, D**



Distance:  
**Various**



Activities:  
**Wildlife tracking**

#### DAY 4: GOMBE STREAM NATIONAL PARK – MAHALE MOUNTAINS NATIONAL PARK

Today you will transfer to Mahale Mountains National Park. You travel on a dhow boat back to Kigoma where you will be met and transferred to your car. There is then a drive of approximately 4½ hours to reach the park. On arrival you can relax with a sundowner on the shores of Lake Tanganyika and prepare for tomorrow's early start.



Pioneer Expeditions  
Stable Cottage • Chydyok Road • Chaldon Herring • Dorchester • DT2 8DN  
t 01202 798922 • e info@pioneerexpeditions.com





### Overnight Mbali Mbali Mahale



Overnight:  
**Tented  
lodge**



Meals:  
**B, L, D**



Distance:  
**Approx. 1½ hr by  
boat, 4½ hr drive**



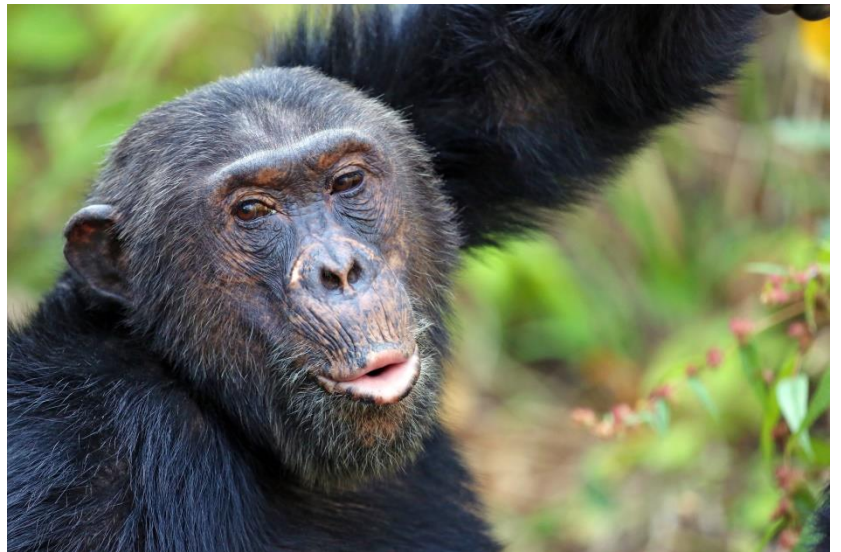
Activities:  
**Transfer**

## DAY 5 & 6: MAHALE MOUNTAINS NATIONAL PARK

Today you will head out with your guide into Mahle Mountains National Park home to the largest populations of chimpanzees in Tanzania, approximately 1000 individuals. Your guide will locate an habituated group, but the length of your trek to the group will vary depending on the location of the chimpanzees.

Once you are with the group there will be plenty of opportunities to observe the chimpanzees and take some memorable photos. Because they are very social primates and therefore it is often possible to witness lots of activity in the hour you have with them.

In the afternoon you will return to the lodge for lunch. You then have the option to spend the rest of the day at leisure or you can enjoy a boat safari or kayak along the lakeshore. In the evenings enjoy your dinner overlooking the shores of Lake Tanganyika.



### Overnight Mbali Mbali Mahale



Overnight:  
**Tented  
Lodge**



Meals:  
**B, L, D**



Distance:  
**Various**



Activities:  
**Wildlife tracking**



Pioneer Expeditions  
Stable Cottage • Chydyok Road • Chaldon Herring • Dorchester • DT2 8DN  
t 01202 798922 • e info@pioneerexpeditions.com

Tan05

## DAY 7: MAHALE MOUNTAINS NATIONAL PARK - KIGOMA

This morning say goodbye to the park and take your transfer by road back to Kigoma, a journey of approximately 4½ hours.

On arrival at the Kigoma Hilltop Hotel you can relax and enjoy the views. Alternatively we can arrange for you to visit to the Dr Livingstone monument, the site of Henry Stanley's and Dr Livingstone's famous encounter "Dr Livingstone I presume", please note that this needs to be arranged in advance.



### Overnight Kigoma Hilltop Hotel



Overnight:  
**Hotel**



Meals:  
**B, L, D**



Distance:  
**Approx. 1½ hr &  
2-3 hr drive**



Activities:

## DAY 8: KIGOMA - DEPARTURE

The end of your incredible trip! Today you will be transferred to Kigoma airport in time for your flight home.



Overnight:  
**N/A**



Meals:  
**B**



Distance:  
**N/A**



Activities:  
**Depart**

## Important Information

### INCLUDED

- National Park Chimpanzee Tracking permits
- Accommodation as stated in the itinerary
- All meals as described (B= Breakfast, L= Lunch, D=Dinner)
- Your guide / driver
- Entrance fees to the parks
- Drinking water provided throughout
- Transportation and airport transfers as stated

### NOT INCLUDED

- International flights
- Meals not mentioned in the itinerary
- Tips and gratuities for guide, driver, local guides and service providers.
- Personal and/or medical expenses.

Please note that the minimum participating age for chimpanzee trekking as determined by the Tanzania National Parks Authority (TANAPA) is 15 years old.





# ACCOMMODATION *at a glance*

---

## Gombe

Mbali Mbali Gombe

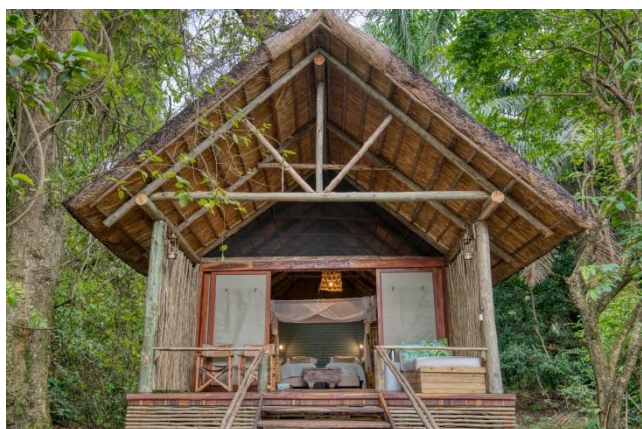
<https://mbalimbali.com/>



## Mahale

Mbali Mabali Mahale

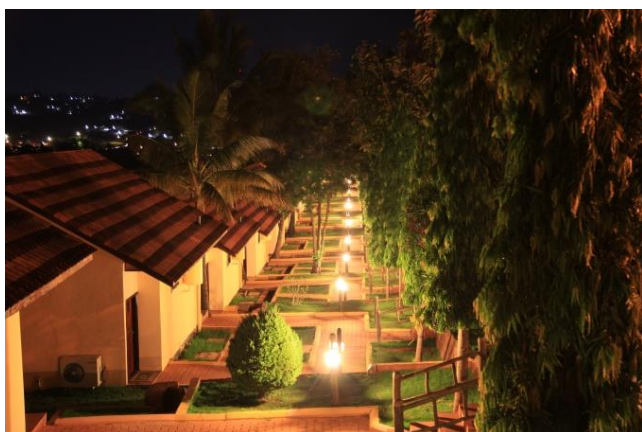
<https://mbalimbali.com/>



## Kigoma

Kigoma Hilltop Hotel

<https://www.kigomahilltop.com/>



Pioneer Expeditions

Stable Cottage • Chydyok Road • Chaldon Herring • Dorchester • DT2 8DN

t 01202 798922 • e [info@pioneerexpeditions.com](mailto:info@pioneerexpeditions.com)

Tan05



## Additional Information

ACTIVITY DURATION	2 – 6 hours per day
SEASON	All year
GROUP SIZE	2+
EXPEDITION SCHEDULE	We run this as a private, tailor-made departure on dates to suit you.
DIFFICULTY LEVEL	Our grades have been designated based on our perception of the degree of physical activity you are likely to require to enjoy the adventure. These are only a guideline. This itinerary has a 'Medium' level (2 – 5 hours of activities per day). This means that you will need an average level of fitness.
LOW SEASON	5 <sup>th</sup> Jan – 28 <sup>th</sup> Feb 1 <sup>st</sup> Nov – 20 <sup>th</sup> Dec
HIGH SEASON	21 <sup>st</sup> Dec – 4 <sup>th</sup> Jan 30 <sup>th</sup> May – 31 <sup>st</sup> Oct

## THE PIONEER BOOKING PROCESS

Where do you go from here? Well, you can feel free to email us at [info@pioneerexpeditions.com](mailto:info@pioneerexpeditions.com) if you're interested in this trip, or any of our other expeditions from around the world. Visit our website [www.pioneerexpeditions.com](http://www.pioneerexpeditions.com) to unearth all of our other equally amazing trips and destinations.

### 1. Contact us -

We will be happy to answer any questions or enquiries you may have. From here we will begin to plan and put together your dream adventure holiday! Alternatively, on our website you will find our booking and enquiry forms; once filled in, we will be notified of your enquiry and will get back to you ASAP.

### 2. Leave everything to us -

Everything will be arranged and booked by us, but we will make sure to keep you updated every step of the way. In addition, we can arrange your international flights if needed, as we have access to competitive airfares. We can also arrange any additional tours or additional night's accommodation.

### 3. Wait for your adventure to begin -

Sit back and count down the days until your trip of a lifetime with Pioneer Expeditions. We'll handle all of the last minute preparations and provide you with everything you need. All practical information will be sent out to you, prior to your trip.

If you feel like altering this itinerary to suit your personal preferences, we can arrange all of that and more – just get in contact with us and let us know your requirements and wishes. From here, we can simply tailor-make your dream holiday.

