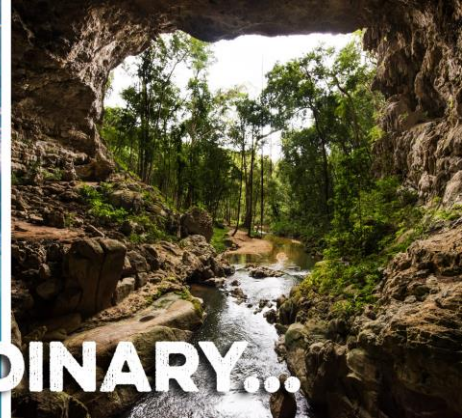




**Belize**  
Wildlife and Family Adventure



# PIONEER EXPEDITIONS



DO SOMETHING EXTRAORDINARY...

## ITINERARY

10 DAYS • 9 NIGHTS

## Belize • Wildlife and Family Adventure

Belize City – Dangriga – Orange Walk District – Punta Gorda –  
Placencia – Belize City

## HIGHLIGHTS

- Visit remote jungle Clad Mayan sites
- Spotting Caimen at nights
- Experience Belize's rich cultural diversity
- Snorkel with Manatees at Snake Caye
- Relax and eat local catch in Placencia

## TOUR ESSENTIALS

Tour Style	Wildlife
Tour Start	Belize City
Tour End	Belize City
Accommodation	Hotel, Resort, Camp
Included Meals	9 Breakfasts, 8 Lunches, 5 Dinners
Difficulty Level	Medium

## EPIC BELIZE ADVENTURE



The Wildlife Family Adventure takes you from the lush Northern rainforests of this small, natural paradise to the Southern tropical lowlands. We'll get you away from the busier cayes and inland lodges on a balanced adventure where you'll have the opportunity to explore wild rivers, visit remote Mayan villages and get active!



Pioneer Expeditions  
Stable Cottage • Chydyok Road • Chaldon Herring • Dorchester • DT2 8DN  
t 01202 798922 • e info@pioneerexpeditions.com

BEL03

# BELIZE *an overview*

Belize may play a small role in Central America in terms of size but this heavenly country is packed with culture, spectacular scenery and adventure. An intriguing blend of Latin America and the Caribbean can be expected with a fascinating, unique merge of various cultures. Sparsely populated Maya Mountains, thick tropical forests, dazzling white sandy beaches and incredible sea life are all waiting to be explored. Boasting the second largest coral reef on Earth, the Belize Barrier Reef is known to be the country's pride and joy, for good reason. Heading into the pristine clear seas, encounter a medley of exotic coral, fish and turtles and investigate underwater caves and walls. The thriving underwater life circles the stretches of exquisite cayes running parallel with the mainland, situated in the pristine Caribbean Sea. The cayes are perfect for some paradise-based activities/adventures, as well as some relaxation. Furthermore, Belize doesn't disappoint in terms of nature, displaying some outstanding forms of wildlife including toucans, spider monkeys, howler monkeys, peccaries, coatimundis, gibnuts and green iguanas; wild cats can also be found hidden in the depth of its Jungles, including jaguars and ocelots. Belize is a truly understated paradise, wildlife-haven and adventure capital.

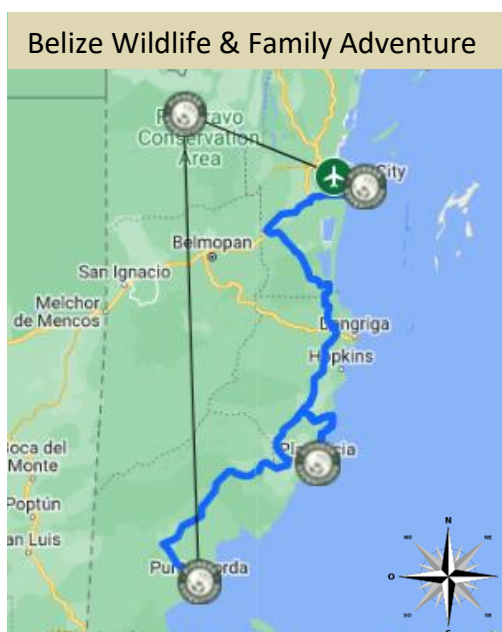
## WHY PIONEER EXPEDITIONS?

Pioneer Expeditions are one of the few specialists that really *do* off the beaten track and unique adventures. The team have a real passion for wildlife and adventure travel which we love to share with our clients. We delight in searching the world for new destinations, new experiences and creating the most incredible adventures.

We like to introduce our clients to unique, the different, and the incredible. Whether it is through wildlife tracking, sea kayaking, snorkelling, trekking, rafting, cycling or observing wildlife in its natural environment, we want to give you the real Pioneer experience.

From the moment you choose to travel with Pioneer Expeditions until you return back home, you are supported by our dedicated team. We listen to what you want and can create an itinerary around your specific needs, working with your budget and with a commitment to responsible travel. Alternatively, our small group tours have a maximum of 12 people, making it a much more personal experience.

## ITINERARY



Pioneer Expeditions

Stable Cottage • Chydyok Road • Chaldon Herring • Dorchester • DT2 8DN

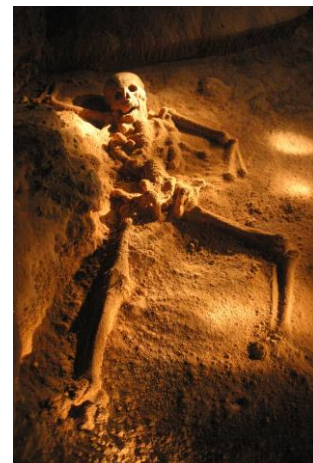
t 01202 798922 • e info@pioneerexpeditions.com

BEL03

## DAY 1: ARRIVE IN BELIZE CITY & ORANGE WALK DISTRICT

Arrive at the Belize International Airport where you will be picked up from and transferred to your lodge where you'll stay for 3 nights.

Orange Walk District is home to steamy jungle rivers, untamed wilderness and exotic wildlife, farmland, and some of Belize's most important Maya ruins. Factor in a handful of first-rate jungle lodges and infrequent visits by tourists, and you've found the perfect off-the-beaten-path spot for your jungle adventures. By day, you can play the intrepid jungle explorer; at night, you can return to a thatched-roof villa and kick back with a glass of wine in distinctive eco-lodges like Chan Chich Lodge or Lamanai Outpost Lodge. Orange Walk is home to the biologically rich Maya Forest, the largest contiguous forest north of the Amazon basin, which stretches from Belize through northern Guatemala and into Mexico. Within this expansive region-encompassing jungle, savannah, and wetlands you'll find Belize's largest private reserve, Rio Bravo Conservation and Management Area, extending 934 sq. km/360 sq. mi. You'll also find the birders' mecca, Crooked Tree Wildlife Sanctuary, where endangered species such as the Mexican black howler monkey, Central American river turtle, and yellow-headed parrot find protection on more than 16,400 acres of wetlands and terrestrial habitats. Along the winding New River, which empties in eastern Orange Walk, you'll discover the archaeological site of one of the largest and longest-inhabited Maya ceremonial centers in Belize, Lamanai. Here you can surround yourself in the mysteries of the ancient ruins in the heart of the jungle. Further up the river, Orange Walk Town is known as "Sugar City" reflecting this farming region's robust sugar cane industry.



*Overnight in Lamanai Outpost Lodge – 3 Night Jungle Adventure Package/Superior Garden View Cabin (2 Queen)*



Overnight:  
**Lodge**



Meals:  
**NA**



Distance:  
**N/A**



Activity:  
**Travel**

## DAYS 2: LAMANAI OUTPOST LODGE

You will take part in activities that are included in the package provided by the Lodges guides.

*Overnight in Lamanai Outpost Lodge Lodge – 3 Night Jungle Adventure Package/Superior Garden View Cabin (2 Queen)*



Overnight:  
**Lodge**



Meals:  
**B, L, D**



Distance:  
**N/A**



Activity:  
**---**

## DAYS 3: LAMANAI OUTPOST LODGE

You will take part in activities that are included in the package provided by the Lodges guides.

*Overnight in Lamanai Outpost Lodge Lodge – 3 Night Jungle Adventure Package/Superior Garden View Cabin (2 Queen)*



Overnight:  
**Camp**



Meals:  
**B, L, D**



Distance:  
**N/A**



Activity:  
**---**





## DAY 4: ORANGE WALK DISTRICT & PUNTA GORDA

In the morning you'll have breakfast at the Lodge and spend the rest of the morning in Orange Walk District (Unguided).

Later on you will be transferred for your scheduled flight to Punta Gorda Airstrip where you will be picked up from and transferred to your new lodge for dinner.

### Punta Gorda

Punta Gorda (known as PG), the southern-most town in Belize, is home to about 5,500 people of eclectic backgrounds and languages, and serves as a gateway between Belize and Guatemala. Tranquil, eco-friendly lodges just outside of PG make it the ideal home base for nearby land and sea excursions. Plan day trip to archaeological sites like Lubaantun and Nim Li Punit, or head to nature's playground, such as Mayflower Bocawina National Park, the waterfalls of Rio Blanco, the caves of Yok' Balum, and the Barrier Reef's Sapodilla Cayes. And if you love sport fishing, PG is your fly-fishing heaven for tagging permit, bonefish, and tarpon.

*Overnight in Big Falls Lodge – Hardwood Cabana (2 Queen Beds)*



**Overnight:**  
**Lodge**



**Meals:**  
**B, L, D**



**Distance:**  
**Approx. 45 min**



**Activity:**  
**Travel**

## DAY 5: MANATEE SNORLEKING TOUR

You'll start your morning with a full American breakfast at the lodge and have a free afternoon to explore Punta Gorda (Unguided).

### Manatee Snorkeling Tour

Immerse yourself in teeming marine life and vanishing species during a delightful, half-day sea excursion. Heading north from Punta Gorda's Joe Taylor Bridge, stop at the Rio Grande Estuary for a brief introduction to the Port of Honduras Marine Reserve. Then cruise over to Frenchman Lagoon and watch for the endangered West Indian manatee - a shy, gentle giant also known as the sea cow. At the next stop, Snake Cayes, relax on the white-sand beach, snorkel in warm waters known for diverse species of fish and coral, and enjoy a picnic lunch in paradise.

Feel free to scout around for a glimpse at a red tail boa constrictor, the namesake of Snake Cayes. Finally, stop in at the TIDE ranger station at Abalone Caye to meet the rangers and learn more about their valuable work.



*Overnight in Big Falls Lodge – Hardwood Cabana (2 Queen Beds)*



**Overnight:**  
**Lodge**



**Meals:**  
**B, L, D**



**Distance:**  
**N/A**



**Activity:**  
**Snorkeling**



## DAYS 6: RIO GRANDE KAYAKING

You'll start your morning with a full American breakfast at the lodge and have a free afternoon to explore Punta Groda (Unguided).

### Rio Grande Kayaking

You will be driven the six miles to the village of San Miguel and the road bridge over the Rio Grande where you will begin your kayaking expedition downstream to the Lodge itself. This is a trip of between 3.5-4 hours. There is no white water but you will float down the jungle clad banks of the deep green river and may see turtles, river otters and many iguanas which often launch themselves from their tree perches over the water at the approach of kayaks to seek refuge on the river bottom. There are also many herons, cormorants, kingfishers and other bird species to make this a magical and unforgettable experience.



*Overnight in Big Falls Lodge – Hardwood Cabana (2 Queen Beds)*



**Overnight:**  
**Lodge**



**Meals:**  
**B, D**



**Distance:**  
**Approx. 3-4 hour drive**



**Activity:**  
**Kayaking**

## DAY 7: MONKEY RIVER TOUR EN ROUTE TO PALACENCIA

You'll start your morning with breakfast at the lodge.

The Monkey River Tour is a perfect break to enjoy nature on a transfer from Punta Gorda to Placencia. You will board a small boat to float through the lush jungle to the calls of river birds and howler monkeys. En route, an experienced river guide will point out some of this region's abundant wildlife, such as Morelet's crocodiles, iguanas, and a diverse variety of birds. The tour then moves to land for a moderate, 40-minute jungle hike to spot troops of howler monkeys, toucans, snakes, and other rainforest flora and fauna. The guide will talk about various herbal medicinal plants found along the trail. After lunch, you can wander through Monkey River Town, a small fishing village where families still live without electricity. On the return trip to Placencia, you will watch for graceful West Indian manatees as the captain steers the boat slowly through the mangroves and lagoon.

### Placencia

Franked on the west by a sparkling lagoon fringed with mangroves, and on the east by the turquoise Caribbean Sea, the peninsula of Placencia offers endless options for adventure and relaxation. Go diving or snorkeling along the Barrier Reef, explore mangroves and deserted cayes by kayak, spot birds and wildlife on Monkey River or at Cockscomb Nature Sanctuary, or go spot fishing for tarpon, permit, yellowfin tuna, or king mackerel. Then again, you could just starchy out with your favorite drink on the silky sand of the most spectacular beaches on the Belize mainland, listening to the waves breaking against the shore.

*Overnight in Chabil Mar Villas – 2 Bedroom Sea View Garden Villa (1<sup>st</sup> floor)*



**Overnight:**  
**N/A**



**Meals:**  
**B, L**



**Distance:**  
**N/A**



**Activity:**  
**Exploring**



## DAY 8: PLACENCIA CAYES SNORKELLING

You'll start your day with breakfast at the lodge and then pick up your gear, walk down to the dock, and hop aboard a motorboat to cruise out to the magnificent Belize coral reef for a day of breathtaking snorkeling. A 35-minute voyage takes you to the closest destination, Laughing Bird Caye; farther out lie Silk Caye. Please note that the specific snorkeling spots vary depending on the weather and, of course, your preferences. When the boat reaches the caye, slip on your mask, fins and snorkel, and swim straight out from the beach. Enjoy the kaleidoscope of colourful fish gliding in and around beautiful coral formations in the warm, crystal blue waters. Keep an eye out for spiny lobsters scuttling about the seafloor. Head back to shore to take a short break and enjoy a delicious traditional Belizean lunch. Then ease back into the boat for an afternoon of snorkeling at a second caye (depending on weather). After an unforgettable day of reef snorkeling, return to the boat for the cruise back to the mainland.




Overnight in Chabil Mar Villas – 2 Bedroom Sea View Garden Villa (1<sup>st</sup> floor)

 Overnight: <b>N/A</b>	 Meals: <b>B, L</b>	 Distance: <b>N/A</b>	 Activity: <b>Snorkeling</b>
---	---	---	--

## DAY 9: PLACENCIA

Free day in Placencia

Overnight in Chabil Mar Villas – 2 Bedroom Sea View Garden Villa (1<sup>st</sup> floor)

 Overnight: <b>N/A</b>	 Meals: <b>B</b>	 Distance: <b>N/A</b>	 Activity: <b>N/A</b>
--	---	--	--

## DAY 10: END OF TRIP

It's time to say goodbye to Belize.

You'll have breakfast in the morning at the lodge and then you will be transferred from Chabil Mar to Placencia Airstrip where you will take a domestic flight to Belize International Airport for your flight home.

 Overnight: <b>N/A</b>	 Meals: <b>B</b>	 Distance: <b>Approx. 5min drive and 35min flight</b>	 Activity: <b>Travel</b>
---	--	---	--



# IMPORTANT INFORMATION

## INCLUDED

- All breakfast
- Other meals mentioned in the itinerary
- Accommodation as mentioned, double occupancy
- Tours and activities as mentioned
- Transport as mentioned, in minibus
- Domestic flights as mentioned
- Local Taxes

## NOT INCLUDED

- Alcoholic beverages or additional beverages with meals
- Airport taxes
- Border fees
- Tips and gratuities for drivers and guides
- Personal expenses
- Meals not indicated
- International Flights

Please note:

- Price applies for arrivals on the 1st of January, through departures on the 20th of December, 2023. For Christmas & New Year's period it is necessary to "tailor make" itineraries due to the requested minimum nights in some of the hotels and the significant rise in price.
- Price is based on 1 room with 2 Queen Size bed. Additional cost may apply for extra bed/rollaway.
- All prices are in US \$ and NET to Pioneer Expeditions
- **Prices are subject to change at any time and without notice**





# ACCOMMODATION *at a glance*

---

Accommodation subject to availability

## Lamanai Outpost Lodge

Belize

<https://lamanai.com/>



## Big Falls

Belize

<https://thelodgeatbigfalls.com/>



## Chabil Mar Villas

Placencia

<https://chabilmarvillas.com/>



# ADDITIONAL INFORMATION

---

ACTIVITY DURATION	3-5 hours of activities per day. You will need an average level of fitness.
SEASON	Jan-Apr
BEST TIME TO GO	Jan-Apr
GROUP SIZE	6-12
SINGLE TRAVEL POLICY	<p>Many of our guests travel on their own. This style of trip is ideal for single travelers, combining the benefits of group camaraderie and group security with lots of individual flexibility for what you want to do each day. Single supplement options vary by trip style. Standard trip pricing is based on double occupancy. Solo guests can request either to share twin accommodations with another traveler, or request single accommodations for an additional fee. If you are willing to share and we are able to match you up - no problem and no extra cost. If we cannot match you up then we have a £75 supplement fee. This fee will be applied at the time of booking, but will be reimbursed just before your departure if we are able to match you up.</p> <p>Should you prefer private accommodations, we can provide you with your own room and the following charges apply: Paradise Islands - £250</p> <p><b>Note:</b> The number of single rooms available on most departures is limited and may not be available at each location. If we are not able to provide you with your own room throughout the trip, we will pro-rate the supplement fee.</p>
DIFFICULTY LEVEL	<p>Our grades have been designated based on our perception of the degree of physical activity you are likely to require to enjoy the adventure. These are only a guideline. This itinerary has a medium level (2-5 hours per day). This means that you will need to be of average level of fitness.</p>





---

# THE PIONEER BOOKING PROCESS

---

Where do you go from here? Well, you can feel free to email us at [info@pioneerexpeditions.com](mailto:info@pioneerexpeditions.com) if you're interested in this trip, or any of our other expeditions from around the world. Visit our website [www.pioneerexpeditions.com](http://www.pioneerexpeditions.com) to unearth all of our other equally amazing trips and destinations.

**1. Contact us -**

We will be happy to answer any questions or enquiries you may have. From here we will begin to plan and put together your dream adventure holiday! Alternatively, on our website you will find our booking and enquiry forms; once filled in, we will be notified of your enquiry and will get back to you ASAP.

**2. Leave everything to us -**

Everything will be arranged and booked by us, but we will make sure to keep you updated every step of the way. In addition, we can arrange your international flights if needed, as we have access to competitive airfares. We can also arrange any additional tours or additional night's accommodation.

**3. Wait for your adventure to begin -**

Sit back and count down the days until your trip of a lifetime with Pioneer Expeditions. We'll handle all of the last minute preparations and provide you with everything you need. All practical information will be sent out to you, prior to your trip.

If you feel like altering this itinerary to suit your personal preferences, we can arrange all of that and more – just get in contact with us and let us know your requirements and wishes. From here, we can simply tailor-make your dream holiday.

