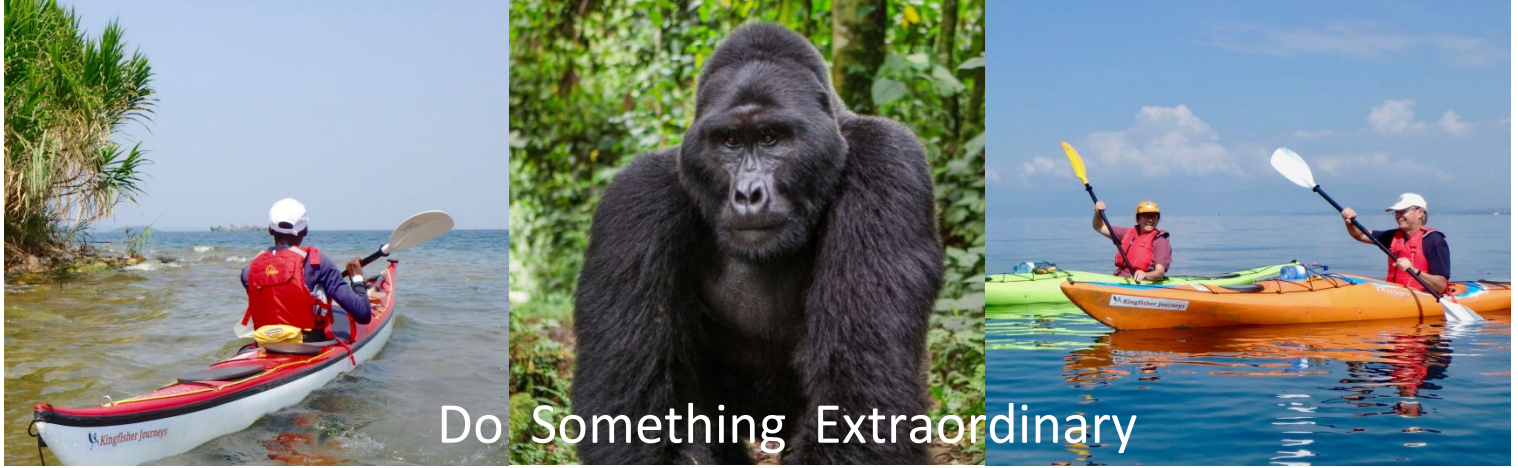




## Rwanda

Kayaking & Silverbacks

# PIONEER EXPEDITIONS



Do Something Extraordinary

## Itinerary

## Kayak Rwanda & Mountain Gorilla trip

10 Days • 9 Nights

Kigali – Gisakura (Nyungwe National Park – Lake Kivu - Gisenyi - Musanz (Volcanoes National Park) - Kigali

### Highlights

### Tour Essentials

- 🕒 Kayak on Lake Kivu
- 🕒 Visit Nyungwe National Park and cross the canopy walk bridge
- 🕒 Track wild chimpanzees
- 🕒 Trek in the Volcanoes National Park and spend time with a group of mountain gorillas

Tour Style	Kayaking Adventure
Tour Start	Kigali
Tour End	Kigali
Accommodation	Hotel, Guest Houses , Lodges, Camp
Included Meals	10 Breakfasts, 9 Lunches, 9 Dinners
Difficulty Level	Medium

Discover Rwanda



Rwanda is known as the “land of a thousand hills” and lies in the heart of Africa. You’ll see this amazing country whilst kayaking on Lake Kivu, a beautiful mountain ringed inland sea. Experience the heart of Rwanda as you walk through the canopy of the rain forest, taste and smell the spices from the colourful markets, canoe down the Mukingwa River and track chimpanzees and the impressive mountain gorillas.



Pioneer Expeditions

Stable Cottage • Chydyok Road • Chaldon Herring • Dorchester • DT2 8DN

t 01202 798922 • e info@pioneerexpeditions.com

Rwa02

# Rwanda *an overview*

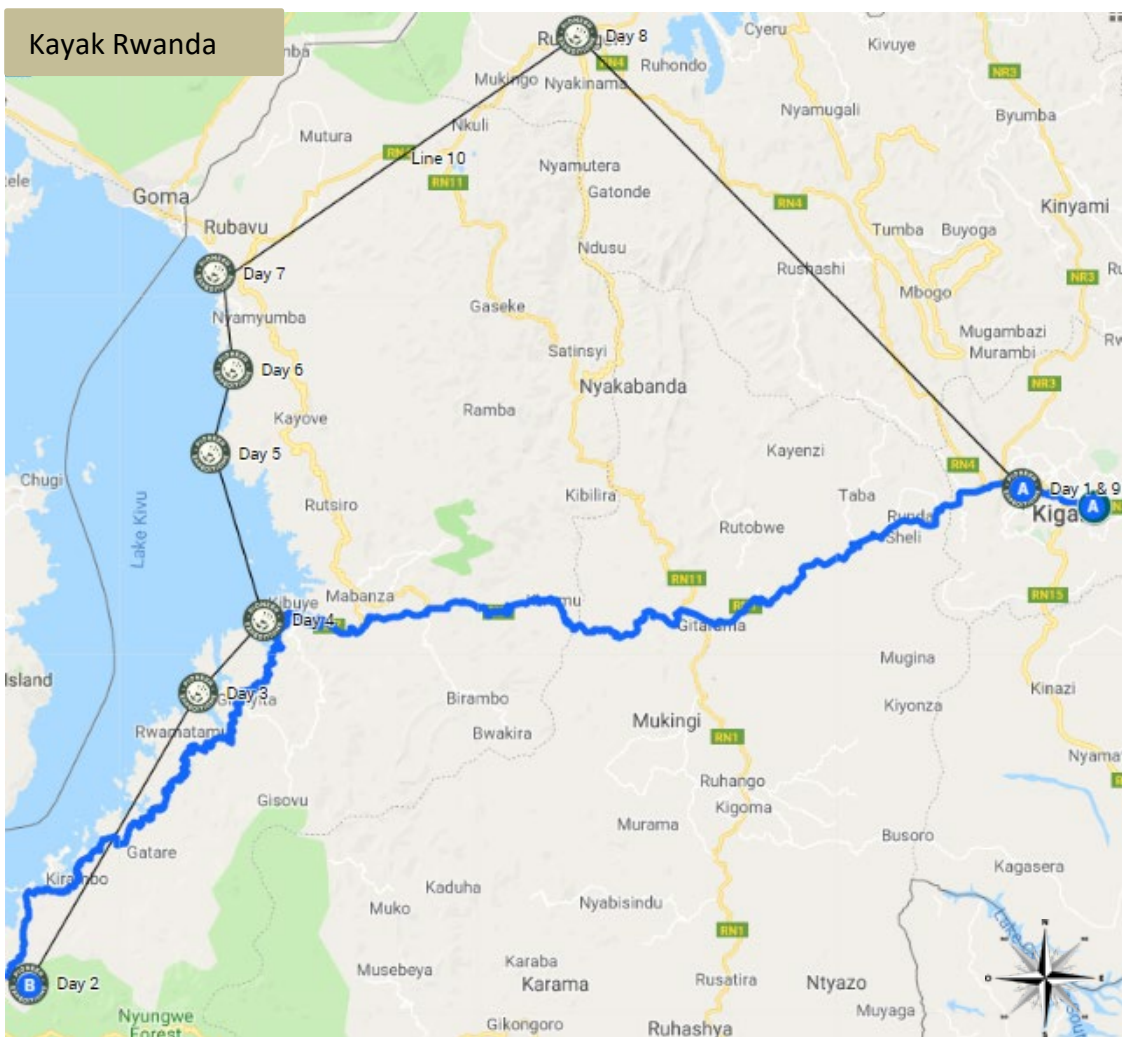
Rwanda is a land locked country in central Africa and is one of the smallest countries on mainland Africa. This 'Land of a Thousand Hills' has 5 volcanoes, 23 lakes and numerous rivers. You will meet locals and discover their traditions, kayak on the enormous Lake Kivu and camp on one of its small islands, walk the canopy trail in Nyungwe National Park, observe wild chimpanzees, and finally trek to see the impressive mountain gorillas of Volcanoes National Park.

## Why Pioneer Expeditions?

Pioneer Expeditions is one of the few specialists that really do off the beaten track and unique adventures. The team has a real passion for wildlife and adventure travel which we love to share with our clients. We delight in searching the world for new destinations, new experiences and creating the most incredible adventures.

We like to introduce our clients to the unique, the different, and the incredible. Whether it is through wildlife tracking, sea kayaking, snorkelling, trekking, rafting, cycling or observing wildlife in its natural environment, we want to give you the real Pioneer experience.

From the moment you choose to travel with Pioneer Expeditions until you return home, you are supported by our dedicated team. We listen to what you want and can create an itinerary around your specific needs, working with your budget and with a commitment to responsible travel.



# Itinerary

## DAY 1: KIGALI

On arrival at Kigali International Airport your guide will pick you up and transfer you to your hotel

Heaven Boutique Hotel is a popular four star hotel with 30 rooms located on two separate properties in a peaceful, residential area of Kigali. Heaven Boutique Hotel features local Rwandan décor, warm hospitality, delicious breakfasts at Heaven Restaurant, and access to a solar-heated salt water swimming pool, outdoor yoga deck and fitness center.



**Overnight:**  
**Hotel**  
**Heaven**  
**Boutique**  
**Hotel**



**Meals: D**



**Distance:**  
**Approx. 15 min transfer**



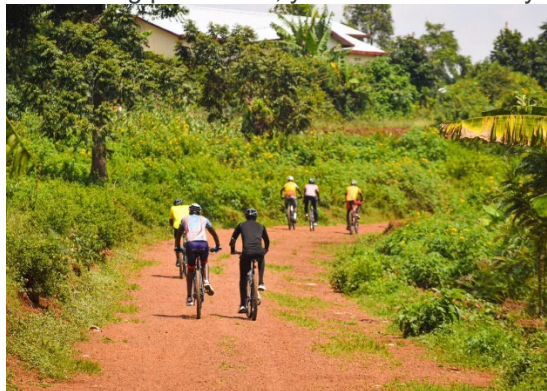
**Activities:**  
**Explore Kigali**

## DAY 2: Umusambi Village Trail Biking & BBQ Lunch Celebration

Umusambi Village is a beautifully restored wetland area, operated by the Rwanda Wildlife Conservation Association.

.As well as the Grey Crowned Cranes, this 21-hectare nature reserve is a peaceful haven for visitors to enjoy the walking trails and be at one with nature, while also learning about our conservation work and the importance of protecting our natural environments.

The Kigali Genocide Memorial is a place of remembrance & learning where you will have time to reflect on a tragic time in Rwanda's past. As you walk around the memorial and think about and remember the victims, 250,000 of whom have their final resting place here, you will be moved by the shocking events that led up to and took place during the genocide



**Overnight:**  
**Hotel**



**Meals:**  
**B, L, D**



**Distance:**  
**Approx. 6 hours**



**Activities:**  
**Hiking**

## DAY 3: Kigali to Nyungwe Forest National Park - Optional tea tour

Set on top of a hill within the Nyungwe Forest National Park, Nyungwe Top View Hill Hotel boasts panoramic views of the surrounding mountains. Each room at Nyungwe Top View Hill Hotel has a seating area equipped with a TV, and some



Pioneer Expeditions  
Stable Cottage • Chydyok Road • Chaldon Herring • Dorchester • DT2 8DN  
t 01202 798922 • e info@pioneerexpeditions.com

Rwa02

rooms have satellite channels. They all have a balcony offering mountain views and a private bathroom fitted with a shower-over-bath combo. Slippers and free toiletries are provided for your convenience.

Guests can enjoy a meal at the on-site restaurant or relax with a drink at the bar. Barbecue facilities are also available. Nyungwe has a 24-hour front desk and arrange shuttle services on request.

Using Nyungwe Top View Hill Hotel as your peaceful retreat to return to, head out to the forest in search of chimpanzees and colobus monkeys, explore scenic nature trails or visit to a nearby waterfall.

*Overnight Top View Hotel (or similar).*



**Overnight:**  
**Lodge**



**Meals:**  
**B, L, D**



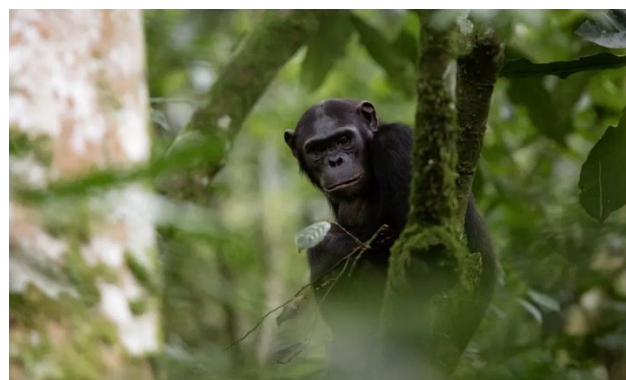
**Distance:**  
**Approx. 4 hrs**



**Activities:**  
**Chimp Tracking**

#### DAY 4: Chimpanzee tracking and Canopy walkway

Spend an amazing hour watching a troop of wild chimpanzees in the forest! Setting off very early at 5am, you will transfer to a section of Nyungwe Forest known as Cyamudongo, where most of Rwanda's habituated chimpanzees are located. Here you'll meet your local ranger a small visitor centre, and then as soon as the trackers locate the family of chimpanzees – that number about 40 individuals – you'll be off, trekking along the paths but also possibly, scaling short sections of the steep rainforest slopes immersed in the forest. Listen carefully and you may hear the chimps before you see them literally swinging from the trees or possibly running around on the ground all around you



This is a wonderful wildlife encounter! However, there's more because chimps are only one of the primate species that are found in Nyungwe Forest; So there's a good chance you may also encounter some of the others as such as Silver Monkey, L'Hoest Monkey, Owl faced monkeys, Red-Tailed Monkey, Crowned Monkey, Dent's Mona Monkey, Vervet Monkey and Olive baboons

Accessible from the Uwinka Visitor Centre a Forest Ranger will lead your walk through the forest. With an eye for some of the 310 bird species, butterflies, orchids, centuries-old trees and 75 mammals including 13 primates that live here this walk is a spectacular journey in the largest surviving example of an Afro Montane ecosystem and one of the oldest continuously forested locations on Earth.

The walk includes a 200m long canopy walkway that takes you high above the forest floor providing a unique platform for observing the forest.

*Overnight Nyungwe Top View Hill Hotel*



**Overnight:**  
**Lodge**



**Meals:**  
**B, L, D**



**Distance:**  
**Approx. 3**



**Activities:**  
**Kayaking**



## DAY 5: Waterfall hike & Transfer to Lake Kivu

Beginning at Nyungwe Forest Lodge, the first half of this hike winds through brilliant green tea fields. As you start to climb higher into the forest, enjoy the gorgeous views northwest to Lake Kivu and the Democratic Republic of Congo.

At 2.3 km the trail descends into one of the most densely vegetated and steepest rainforest ravines on any trail at Nyungwe. Cool misty air and the murmur of a river rise from below, mingled with calls of birds, tree frogs and insects. Ferns, mosses, lichens and flowers are exceptionally abundant in the high humidity. Several species of primates are commonly found here, as well as many birds.

You may enjoy the sighting of the waterfall from two main vantage points depending upon how wet you want to get. The first is at the end of a short spur, which leads to a picnic bench overlooking the fall at 50 meters distance. Small trees partially obscure the view. The falls can be reached by descending to the wild river below and then clambering over wet rocks to a large boulder in the middle of the amphitheatre. From here, you'll be close to the bottom of the falls, where it thunders down.



*Overnight:*  
Comoran  
Lodge



*Meals:*  
B, L, D



*Distance:*  
Approx. 5hrs



*Activities:*  
Kayaking

## DAY 6-7 : Lake Kivu Kayak Adventure - Kibuye to Gishayu via Napoleon Island 2 Days

Come on a journey to discover Lake Kivu's spectacular 'Bay of Islands'. Paddling through the deep azure waters we island hop past uninhabited islands – including Napoleon island with its famous bat colony. We spend the night camping on another beautiful, uninhabited island, which is still mostly covered with natural woodland and so teems with birdlife. We return to Kibuye, via the coast and call into Amohoro Island for lunch.

Day 1: Setting off from Kibuye, we soon approach Lake Kivu's 'Bay of Islands' a beautiful setting unlike anywhere else in the country. We then 'island hop', stop off for lunch and a swim in the crystal clear and impressively clean, fresh water to cool off. In the afternoon, we visit Napoleon Island where there is a remarkable (and noisy) colony of thousands of fruit bats that fight amongst themselves for the best roost. It's then just a short paddle to our campsite, on another beautiful uninhabited island that is still covered with native trees that provide a rare haven for numerous species.





With exclusive access on the island, we set up camp, buy fish for dinner from local fishermen – so supporting a local community – and cook our own, simple but delicious meal, which we can provide for you, around a small open fire.

Then in the silence of the lake, the following morning, we wake to a dawn chorus that is truly remarkable.

Day 2: After a simple breakfast, we turn back towards Kibuye or end in Kinunu for a coffee tour before meeting your driver to proceed to your next destination, this time following the coast where we have superb views of the lush mosaic of crops on small farms that make Rwanda's hills so special. Before reaching Kibuye, we call in for lunch on Amohoro (Peace) Island, where there will be time to contemplate just how special the past couple of days have been. Then, in the afternoon it's just a short paddle back to where we began; was it only yesterday?



*Overnight:*  
**Camp**



*Meals:*  
**B, L, D**



*Distance:*  
**Approx. 6 hours**



*Activities:*  
**Kayaking**

## Day 8 Twin Lakes gravel bike experience

With a quality hard-tail mountain bike or e-bike, helmet and cycling gloves provided, you'll explore the Rwandan countryside on the many small tracks and trails that criss-cross the landscape.

The twin lakes of Ruhondo and Burera are two lakes separated by 1km strip of land and produced by volcanic eruptions. This cycle will give you an opportunity to view all the 5 Rwanda volcanoes, this depends on the weather condition. This is a great way to explore the outskirts of Volcanoes.





We visit the Ellen DeGeneres Campus of the Dian Fossey Gorilla Fund is to see gorilla conservation in action. Building on Dian Fossey's pioneering work, now that gorilla populations of the Virunga Volcanoes are slowly increasing and their habitats are being protected, this centre is a highly recommended, remarkable place to visit.

Mountain gorillas have been monitored and studied closely since Dian Fossey began her work with them in 1967, after establishing the Karisoke Research Center. She started the process of habituating them to the presence of human observers so that she could closely observe and document their behaviors, status, movements and other important information. Today, the Dian Fossey Gorilla Fund trackers and researchers protect and study roughly half of all the mountain gorillas in Rwanda, with the other half protected by the Rwandan national park authorities.

Tiloreza Volcanoes Ecolodge



*Overnight:*



*Meals:*  
**B, L, D**



*Distance:*  
**Approx.5 hours**

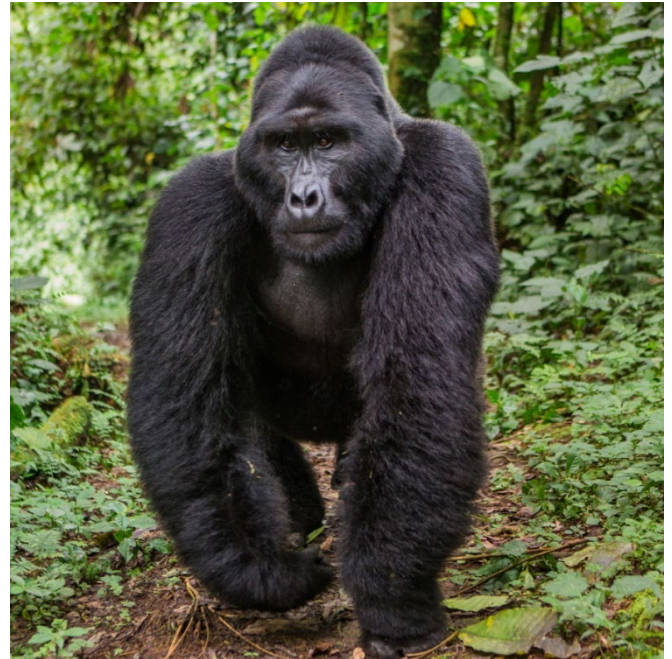


*Activities:*  
**Gorilla tracking**

## DAY 9: MUSANZE – VOLCANOES NATIONAL PARK - KIGALI

An early start to an epic day! Take a short drive to Kinigi, which is 12km away and where the Volcanoes National Park headquarters is located, you need to be there by 7am or you risk invalidating your precious permits! You will meet your park guide who will take time to explain where you will be trekking, which gorilla group you have been assigned, and the guidelines you needed to follow when in the mountain gorilla's presence. Around 8am you will start the trek through the fields towards the park. The trek in the park is at elevations of 2500-3000m, so at times breathing can become a conscious effort as you move through the thick vegetation towards the gorillas. Excitement mounts as you approach the group. Your guide will reassure and calmed the gorillas with deep grunts, and you will be encouraged to do the same. Spending time in the mountain gorilla's presence is truly incredible.

After your trek you will return to the park headquarters. You will then enjoy lunch nearby before making the return journey to Kigali. The drive is approximately 2 hours.



*Overnight Heaven Boutique (or similar).*



Pioneer Expeditions

Stable Cottage • Chydyok Road • Chaldon Herring • Dorchester • DT2 8DN  
t 01202 798922 • e info@pioneerexpeditions.com

Rwa02





Overnight:  
**Hotel**



Meals:  
**B, L, D**



Distance:  
**Approx. 3 hours**



Activities:  
**Trekking**

## DAY 10: KIGALI

Today its time to say goodbye to your guide, they will transfer you to Kigali airport in time for your flight home.



Overnight:  
**N/A**



Meals:  
**B**



Distance:  
**15 min transfer**



Activities:  
**Depart**

## Important Information

### INCLUDED

- 🕒 Mountain gorilla trek permits
- 🕒 Chimpanzee tracking permits
- 🕒 Accommodation
- 🕒 Meals
- 🕒 Your driver/guide
- 🕒 Park entrance fees
- 🕒 Drinking water
- 🕒 Transportation
- 🕒 Airport transfers

### NOT INCLUDED

- International flights
- Meals not mentioned in the itinerary
- Any additional/extra tours or park fees.
- Tips and gratuities for guide, driver, local guides and service providers.
- Extras at hotels (telephone calls, room service, portorage, laundry, alcoholic drinks, etc.)
- Personal and/or medical expenses.

## Accommodation at a glance

### Kigali

Heaven- Boutique Hotel

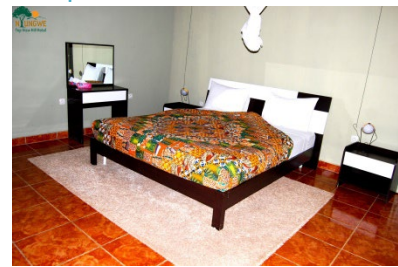
<https://www.heavenwanda.com/>



### Gisakura

Top View Hotel

<http://nyungwehotel.com/Default.aspx>



Pioneer Expeditions

Stable Cottage • Chydyok Road • Chaldon Herring • Dorchester • DT2 8DN

t 01202 798922 • e [info@pioneerexpeditions.com](mailto:info@pioneerexpeditions.com)

Rwa02

**Kibuye, Lake Kivo**  
Eco Lodge- Rwiza Village  
<http://rwizavillage.org/>



**Gisenyi**  
Paradis Malahide Hotel  
<https://www.paradisemalahide.com/>



**Musanze**  
La Locanda  
<http://www.lalocandarwanda.com/>



## Additional Information

ACTIVITY DURATION	2 – 5 hours per day
SEASON	All year
GROUP SIZE	2+
EXPEDITION SCHEDULE	We run this as a private, tailor-made departure on dates to suit you.
DIFFICULTY LEVEL	Our grades have been designated based on our perception of the degree of physical activity you are likely to require to enjoy the adventure. These are only a guideline. This itinerary has a 'Medium' level (2 – 5 hours of activities per day). This means that you will need an average level of fitness.

